



Otorohanga College

Ko te mana mō i te whakamana - Honour Before Honours

Issue # 2

22 March 2019

Term 1 Week 7



**Excellence Endorsement
Badge Ceremony**

Badge Ceremony

EXCELLENCE ENDORSEMENT

NEWSLETTER

Message from our Principal

It's hard to believe that the end of Term 1 is nearly approaching and that the year is well and truly on the way. It has been a busy time for the school and a number of initiatives will soon be in place. I know all our hearts go out to the members of the NZ Muslim community especially those in Christchurch and I still find it hard to believe that an event such as this has occurred in NZ.

I would encourage you all to engage in a conversation with our students and stress the need to be inclusive to accept those who may be different and to reject any kind of violent behaviour.

Several weeks ago, students completed a well-being survey which is aimed at gaining student feedback on how they feel here at school. While there were many positive aspects, the survey clearly showed that we have a number of areas to work on.

Students have identified the following areas of concern:

The care that students and teachers have for each other

Teacher interest in their culture and family

The need to reinforce our school values

Limited student voice

Fair treatment of students by staff

A need for more interesting learning opportunities

Greater teacher awareness of individual students

The teaching of self-management

A need for more respect between students

A need for more respect for teachers

The need to develop an inclusive culture

Students valuing other students' ideas

Asking teachers for help when issues arise with other students

The Senior Leadership Team is taking a detailed look at this survey and it is being shared with both staff and students. The next step will be to work with student focus groups in order to gain a greater understanding of these results and to plan a way forward. These results clearly highlight the need for urgency in this area.

Attendance:

In the last newsletter I highlighted the need to improve our student attendance rate. The Ministry expects a rate of 90% and presently we are tracking at 81%. While our year 9 & 10 rates are on track, the senior school attendance needs, and will be, focus on Years 11 & 12 are at 79%, however our Year 13s are only attending 66% of their timetable classes. These rates in themselves will severely hinder academic attainment.

Student Behavioral Management

While the school remains committed to the principals of restorative practice and working with students in a positive way to improve their behaviour, there

is also a clear need to back this up with an effective consequences for poor behaviour. Hopefully before the end of the term a new system will be introduced which will include lunchtime or after school and Saturday detentions. In all cases parents will be fully informed and given notice when it comes to the after school and Saturday detention. It is important that students realize that unacceptable behaviour will be followed up with a consequence.

Curriculum review

The school is also in the process of looking at a range of schools and the models they use to teach their students. There is a clear need to move away from our more traditional approach and move towards an environment where students have more opportunities to be actively involved in the learning process. Not only could this affect what happens in the classroom, but it could also affect the structure of our school day and the relationship that the school has with the wider community. This is an exciting process, however, it does take time but we hope to introduce whatever we settle upon in a managed way from the start of 2020. There will be an opportunity for full consultation including students, parents, staff and the wider community. Simple aim is to make learning more relevant and thereby improve student engagement. There is plenty of evidence that such an approach would also address issues such as attendance rate and student behaviour. We will keep you fully informed.

SAVE THE DATE

Parent/Student/Teacher Interviews

Wednesday 10th April

2.30pm to 6.00pm



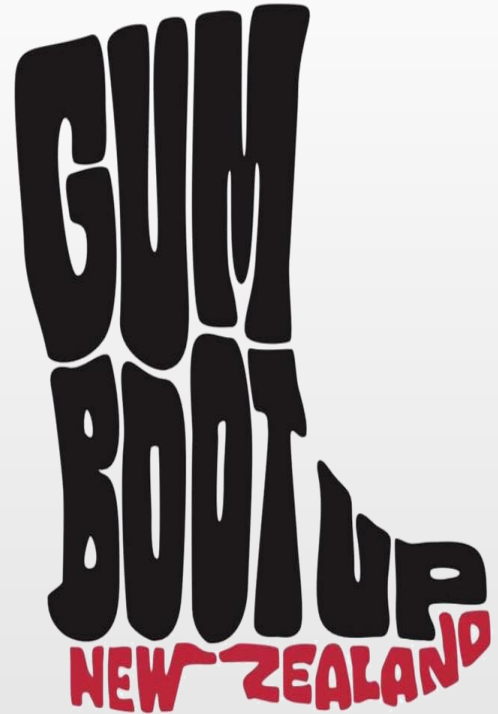
Mr Phil McCreery

I AM HOPE Gumboot Friday

New Zealand's annual provisional suicide number is once again the highest since records began, rising for the fourth consecutive year to a record 668 deaths. New Zealand's suicide rate – the number of suicides per 100,000 population – is now over 13 for the first time. It has been recorded as 13.67, up from 12.64.

This is why we are hosting 'Gumboot up' for Friday the 5th of April. Gumboots are not allowed to be worn inside the classroom and the day is not a mufti day.

On Friday the 5th of April we encourage students and teachers to put their gumboots on, donate a gold coin, and take a walk through 'mud' for one day - the I AM HOPE website describes depression as "walking through mud every day". All proceeds will be deposited into the Kiwibank Gumboot Friday account.



Gumboot Friday 5 April 2019

For many, having depression is like walking

Walk in their shoes for a day: put on your gumboots, give a gold coin and help

B2'S World



Special Olympics Swimming

Placings:

Hanita :	2nd place Breast stroke, 3rd Freestyle
Jennifer:	2nd Back stroke (50 metres)
Heremaia:	1st Breast stroke

1st XV



The Ōtorohanga College 1st XV begin their season this week as they head to Taupo to play in the McQuilkin Cup.

Pre season training has been going well where the focus has been on strength, conditioning and ball skills.

The first XV will look to the experience of Dylan Toa, Raymond Turner and Matauri Waretini to lead the boys around the park, while Bradley Anderson will direct the show from 1st five eight. Tina Anderson joins the staff as manager and Greg Anderson will co coach with Mr. Parsons.

Softball

Softball wrap

Our College team has made steady progress. The players have been fortunate to have this opportunity. Travelling to Hamilton every Saturday has been fun. The last two games have been very close losses. Erini has been very effective on Base Two. Sam Veart had the best glove on last week, catching two players out in a row. Manaaki is proving to be very fast, the more he plays, the more sneakier he is becoming when stealing bases, good work. We have fantastic pitcher, Kai and Kees on catcher, between the two they really control play for our fielding game.

Results to date

Hamilton Boys High Red

loss 13 - 10

Fraser High loss 11 - 10

This week we head into our final game of the season. All the best team!



Tech Block



never let go of your
D R E A M S

Science Lab



Awesome morning
at Blue Springs with Y13s
investigating biodiversity and
doing some serious cardio.

Interviews

SAVE THE DATE

Parent/Student/Teacher Interviews

Wednesday 10th April

2.30pm to 6.00pm

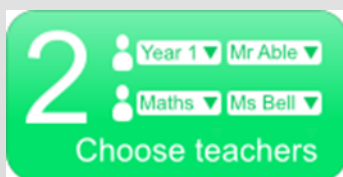
Parent/Student/Teacher Interviews support the three-way partnership that exists in a student's journey through College. Positive relationships among parents, students and teachers result in everyone working together with the student's educational success as the priority. The academic and personal achievement of your child is at the heart of everything we do at Ōtorohanga College.

With this in mind, you are warmly invited to attend the Parent/Student/Teacher Interviews to be held on Wednesday 10th April from 2.30pm to 6.00pm. Interview bookings of 10 minutes per teacher can be scheduled online or through the College Office at times that best suit your needs and schedule. To book your subjects, teachers and times from 1st April onwards:

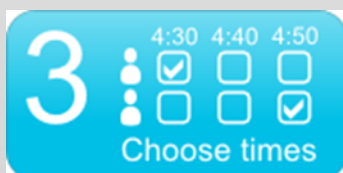
Go to www.schoolinterviews.co.nz/code in your browser and enter the event code **wgm49**. Then follow these three steps:



First enter your email address and full name. If you need to book for more than one student, change the "Book For" setting and enter the other student's name.



On the next page first select the subject then choose from the list of teachers. Select + another teacher. Select GO when all subjects and teachers have been added.



Then you will see a timetable showing when your chosen teachers are available. Simply click on the times that suit you.

If you do not have internet access, please call the College Office on 07 873 8029 where Mrs Willison or Ms Makasale will be able to make a booking for you.

Interviews cont ...

All normal timetabled classes will be running on the 10th April with an adjusted timetable to enable an early school closure at 1.30.

Period 1 – 8.40 to 9.40

Whanau – 9.40 to 10.00

Period 2 – 10.00 to 11.00

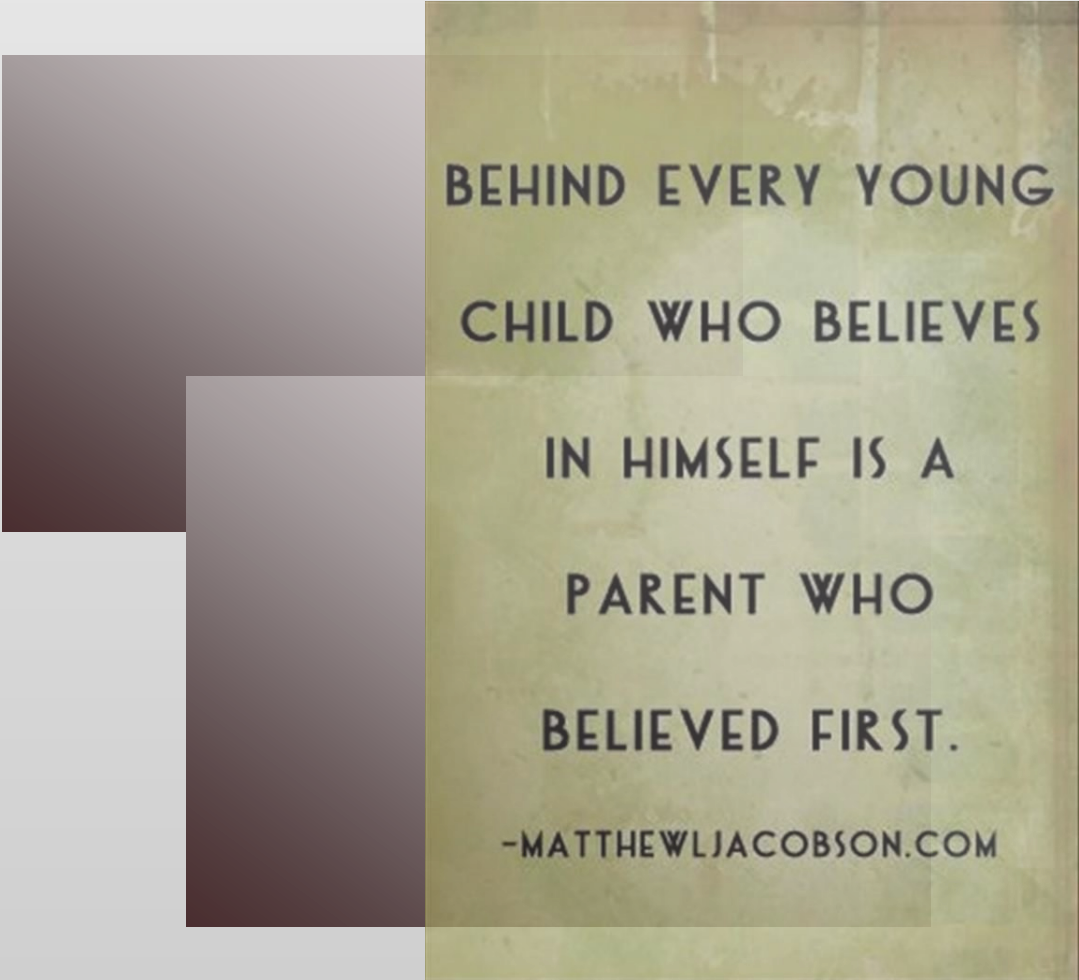
Interval – 11.00 to 11.30

Period 3 – 11.30 to 12.10

Period 4 – 12.10 to 12.50

Period 5 – 12.50 to 1.30

On arriving at the College Foyer, the Student Leadership Team will guide you to the classrooms in which your interviews will be held. We eagerly anticipate seeing you and your child at the Parent/Student/Teacher Interviews as they are a wonderful opportunity to connect, communicate and collaborate with your child/ren's teachers and to discuss how we can use a team approach to enhance achievement.



BEHIND EVERY YOUNG
CHILD WHO BELIEVES
IN HIMSELF IS A
PARENT WHO
BELIEVED FIRST.

-MATTHEWLJACOBSON.COM

Did you know??

Certificate Endorsement

NCEA qualifications can be endorsed with Merit or Excellence to reflect high achievement. Certificate Endorsement is where students gain 50 or more credits at Excellence level over all the courses they are studying, their NCEA certificate will be endorsed with Excellence. If students gain 50 or more credits at Merit and/or Excellence then their NCEA certificate will be endorsed with Merit. Credits can be earned over more than one year. Endorsement awards show on a student's New Zealand Record of Achievement - NZRoA.

Course Endorsement

NCEA qualifications can be endorsed with Merit or Excellence to reflect high achievement. Course Endorsement is where students gain 14 or more credits at Excellence in a course in a single year, they will be awarded an Excellence endorsement in that course; or a Merit endorsement if they gain 14 or more credits at Merit, or a mix of Merit and Excellence. At least three of these credits must be from externally assessed standards and three from internally assessed standards. A Course Endorsement can be awarded even if a qualification for that Level of NCEA is not achieved

Are You Using The Parent Portal?

The Parent Portal enables parents/caregivers to track their child's progress in a number of ways including live attendance information and academic achievement.

Parents/caregivers are able to see the following data:

Calendar

Enrolment

Course Selection

Library

Details: Financial, Attendance, Groups

Results: NCEA Summary, Current Year Results, Reports

Careers

Follow the three steps below using your unique username and password.

Enter the web address www.otocoll.school.nz into the address bar

Click on Parent Portal

To obtain information about your child enter the unique username and password at the login section

From Wednesday 3rd April the Term One Progress Reports can be viewed on the Parent Portal.

Digital Technologies Curriculum

Student Rights and Responsibilities

Students have the right to learn in a safe environment involving blended learning technologies.

Students have the right to have their privacy respected and protected.

The use of social media is for learning activities as by the direction of the teacher.

Students have the responsibility to comply with Teacher/ICT staff requests regarding device use. e.g. only accessing sites appropriate to the content being delivered.

Defiance and/or lack of compliance with the

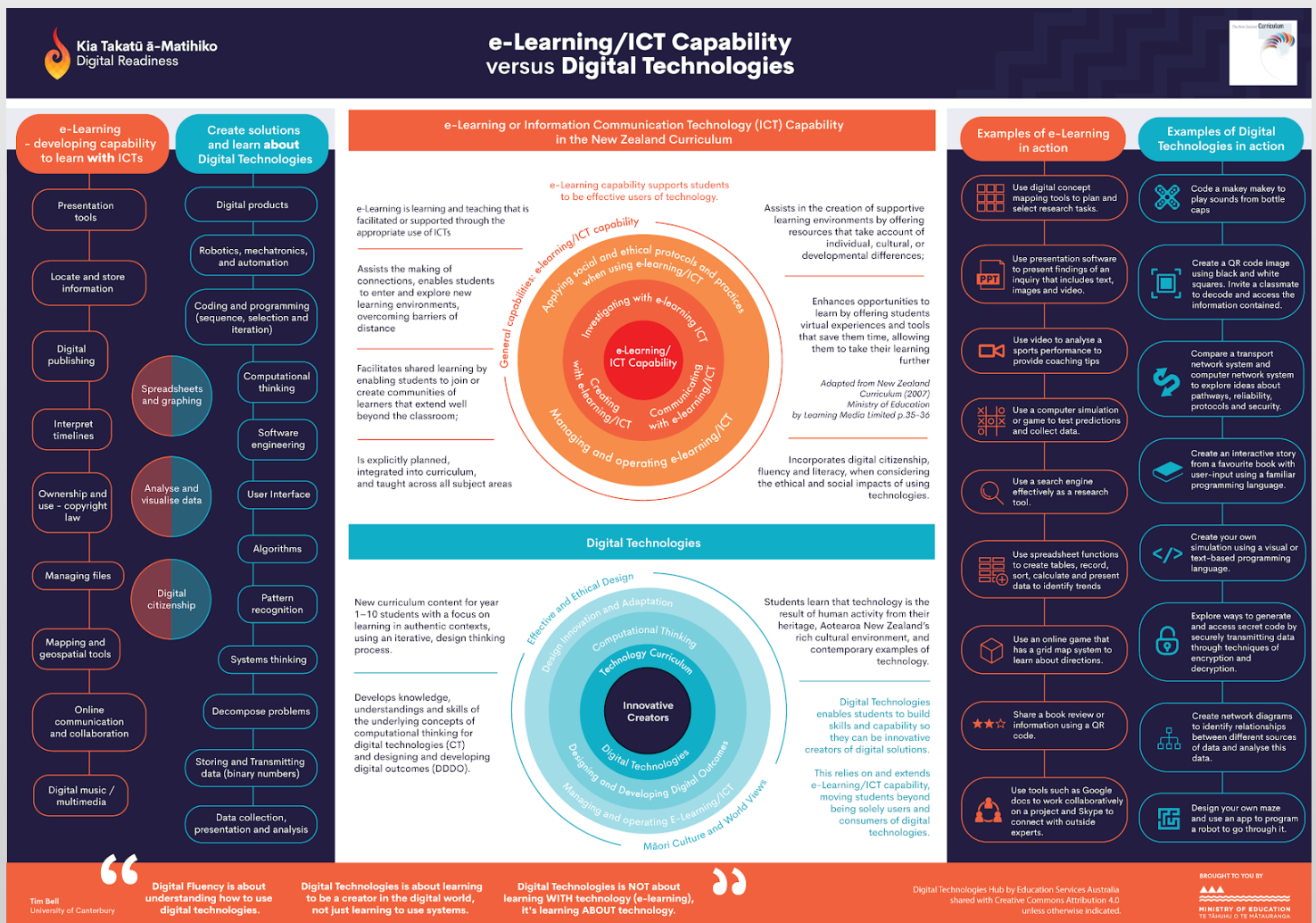
rights and responsibilities will result in the immediate uplifting of the personal device. It will be stored securely on site until the restorative process has been completed.

Staff Rights and Responsibilities

Staff have the responsibility to enhance student learning through blended learning technologies.

Staff have the right to have their privacy respected and protected.

Staff have the right to direct the use of social media for learning activities.



[This Ministry of Education Infographic explaining ICT and Digital Technologies can be viewed HERE](#)

Student Wellbeing

These are the services that are currently available here at Ōtorohanga College:

Monday

Public Health Nurse Clinic – Anne Green

Office situated on side of E block

10.00 – 11.00

MAKE YOUR APPOINTMENT AT THE FRONT OFFICE

Guidance counselling available for an appointment with **Naomi Bennett** see your Dean.

FOR AN APPOINTMENT SEE YOUR DEAN

Tuesday

Physiotherapist - Kara Thomas

8.45 – 12.00 in Student Wellness 3 (Sick bay)

MAKE YOUR APPOINTMENT AT THE FRONT OFFICE

Guidance counselling available for an appointment with **Naomi Bennett** see your Dean.

FOR AN APPOINTMENT SEE YOUR DEAN

Wednesday

Attendance Service

8.30 – 3.00 in the Interview Room

Guidance counselling available for an appointment with **Naomi Bennett** see your Dean.

FOR AN APPOINTMENT SEE YOUR DEAN

Thursday

Drug and Alcohol Counsellor Available

Youth Intact

FOR AN APPOINTMENT SEE YOUR DEAN

Physiotherapist - Kara Thomas

8.45 – 12.00 in Student Wellness 3 (Sick bay)

MAKE YOUR APPOINTMENT AT THE FRONT OFFICE

Guidance counselling available for an appointment with **Naomi Bennett** see your Dean.

FOR AN APPOINTMENT SEE YOUR DEAN

Friday

Physiotherapist –Kara Thomas

8.45 – 12.00 in Student Wellness 3 (Sick bay)

MAKE YOUR APPOINTMENT AT THE FRONT OFFICE

Doctor Joyce Wong

1.00 - Student Wellness 3 (Sick bay)

MAKE YOUR APPOINTMENT AT THE FRONT OFFICE

Contact Us

Attendance

It is a legal requirement that students attend school. Requests must be made in writing to the Whānau Teacher for any time out of school. At Ōtorohanga College we have a system where contact is made on the first day of absence by the Whānau Teacher to the family for an unexplained absence. You will also notice that we regularly send out text messages to families of students that have an unexplained absence. We ask that families / caregivers ring the College Office to explain if your child is sick each day.

In our student management system students will be marked absent and the code will be changed when contact has been made with the school.

For a student staying home sick the code is changed to a M, a medical certificate must be supplied after 3 days of Ms.

The code will be changed to a J for Justified absence if for example the bus breaks down, or there is an accident or a road closure or in extreme weather conditions that stops the student being at school.

Did you know?

For absentee students...

You can tell us your child will be away by:

- ♦ Using the **Skool Loop NZ** App
- ♦ Using the absentee form on our school website (Smart phone friendly)

www.otocoll.school.nz/absences

- ♦ Email admin@otocoll.school.nz
- ♦ Phone 07 873 8029

It will change to an E for Explained absence, but not justified in the following cases: a student looking after their siblings for the day, a student took the day off for a haircut.

The Ministry of Education require us to code a family holiday during term time as G, this is not a justified absence. Students who still have an

unexplained absence on the second day will be referred to the Dean. Students who have 3 days of unexplained absences will be referred to the Attendance Service.

Sickness

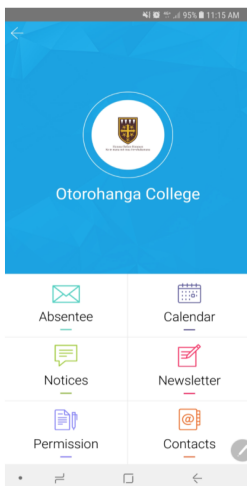
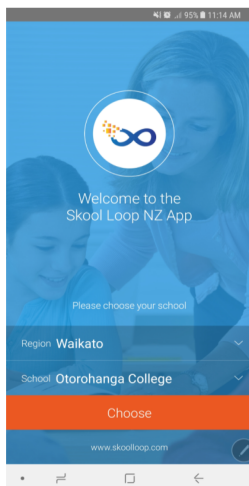
If a student becomes ill during the school day, the student reports to the front Office and every endeavour will be made to make contact with home. Students will not be allowed to go home without a caregiver being contacted.

Signing Out

If a student needs to leave College during the school day they will need to bring a signed note from home to the front Office to sign out. Students without notes are not permitted to leave the school grounds. Students may apply for a lunch pass; if approved this allows students to go to their family home for lunch during lunchtime. The student will be issued with a laminated lunch pass which you must carry on you when leaving at lunchtime. A lunch pass still requires you to sign out each day although you do not need to bring a note every day. Please see Mrs Russell if you think you may need a lunch pass.

You can now connect to Ōtorohanga College

using the SKOOL LOOP NZ App

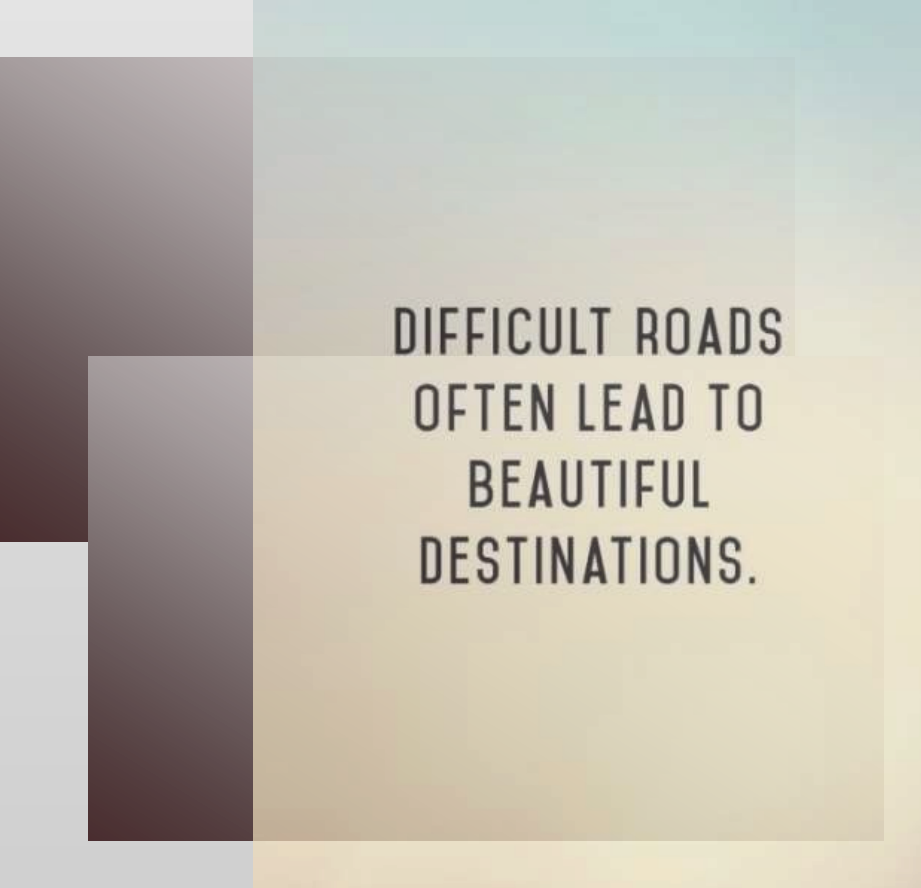


- ♦ Events
- ♦ Notices
- ♦ Push notifications
- ♦ Absentee information
- ♦ Current newsletter
- ♦ Permission forms

FREE to download
and use

School Calendar

DATE	ACTIVITY
28 March	Year 13 Dairy NZ Careers Day Year 12 Agribusiness Farm visit Year 13 Biology / Kaniwhaniwha Reserve
3 April	Progress reported post on Parent Portal
5 April	Year 8 School Experience Day
12 April	End of Term Newsletter # 3



DIFFICULT ROADS
OFTEN LEAD TO
BEAUTIFUL
DESTINATIONS.



Honour Before Honours
Ko te mana mō mua i te whakamana

Ōtorohanga College

thank our sponsors for
their generous support



JANTHA GOODING - MARKETING CONTRACTOR -

029 770 4469

janthagooding@orcon.net.nz



More than just numbers

Call us on (07) 873 8189

Tim Jones B.Com. (Ag). C.A.
Aaron Cornelissen BMS. C.A.

CHARTERED
ACCOUNTANTS



Bevan Aymes
Director

PO Box 226, Otorohanga 3940

Ph: 0800 BEVANZ
(0800 238269)

Mob: 0275 238 269

Fax: 07 870 4132

Email: bevanz.electrical@xtra.co.nz

- Rural
- Commercial
- Domestic



PROVIDING QUALITY PROFESSIONAL ADVICE
AND FRIENDLY SERVICE
TO FARMERS AND BUSINESSES

07 873 7325 Otorohanga
FREEPHONE: 0800 482 928

info@baileyingham.co.nz



Locally owned. Friendly people.
Great advice.

39 Maniapoto Street

Otorohanga

Phone: 07 873 8816

Email: otorohanga@paperplus.co.nz

Website: www.paperplus.co.nz



Greg Smith
SALES MANAGER
greg@patprescott.co.nz
Phone: 07 873 8522

Prescott Toyota
152 Maniapoto Street
Otorohanga 3900



Otorohanga Mitsubishi
1 Maniapoto St, Otorohanga
Tel: 07 873 8169
Fax: 07 873 8168
Mobile: 021 972 449
Email: btaylor@otomitsubishi.co.nz
www.otorohangamitsubishi.co.nz

Bill Taylor
Dealer Principal



Otorohanga College
Bledisloe Avenue, Otorohanga 3900
Phone: 07 873 8029 Fax: 07 873 7414
www.otocoll.school.nz

For Farmside or slower internet connections, use
www.otocoll.school.nz/site-map or click on the **SITE MAP** link
www.facebook.com/ŌtorohangaCollege
www.facebook.com/pathwaycentre
www.facebook.com/ŌtorohangaCollegeSports